



ASSOCIAZIONE PER LA CERTIFICAZIONE
DELLE APPARECCHIATURE ELETTRICHE



Via Tito Livio, 5 - 24123 - BERGAMO (Italy)

tel. +390354175244 fax. +390354534662 e-mail: acaecert@tin.it

Certificate of Conformity

LOVAG-Certificate No. IT 10.129

Page 1 of 3

Apparatus

Low voltage switchgear and controlgear fully insulated assembly - Form 4b
- 3 phases + neutral - 415 V (U_e) - 50 Hz - 1000 V (U_i) - 12 kV (U_{imp}) -
3200 A (I_n)/IP 31- 50 kA (I_{cw}) 3 sec - 50 kA (I_{cc}) at 415 V

This Certificate applies only to the apparatus tested. The responsibility for conformity of any apparatus having the same designation with that tested rests with the manufacturer or responsible vendor.

This certificate has been prepared according to LOVAG (Low Voltage Agreement Group) Objectives and Operating Principles of mutual recognition.

The responsible certification body as member of LOVAG issues a Certificate of Conformity with the above mentioned Standard(s) following the exclusive use of LOVAG Test Instructions wherever applicable.

Only integral reproduction of this Certificate or reproductions of this page accompanied by any page(s) on which are stated the tests performed and the assigned rated characteristics of the apparatus tested, are permitted without written permission from the LOVAG signatory responsible for this Certificate.

The expiry of this certificate see ACAE certification scheme.

Designation

AMSI 3200 A

Manufacturer or responsible vendor

ANORD Control Systems Ltd. Industrial Estate - Coes Road, DUNDALK, Co Louth, IRELAND

Tested for: ANORD Control Systems Ltd.

Tested by: ACAE Laboratory IA.01

The apparatus, constructed in accordance with the description mentioned in the Test Report listed on this Certificate has been subjected to the series of proving tests in accordance with IEC 61439-2 Ed.1.0 (2009-01)

- Verification of clearance and creepage distances (10.4)
- Verification of the effectiveness of the protective circuit (10.5)
- Verification of the dielectric properties (10.9)
- Verification of temperature-rise limits (10.10)
- Verification of short-circuit withstand strength (10.11)

The results are shown in the Test Report in accordance to LOVAG. The values obtained and the general performance are considered to comply with the above Standard(s) and to justify the characteristic assigned by the manufacturer as stated below:

415 V (U_e) - 50 Hz - 1000 V (U_i) - 12 kV (U_{imp})

This document includes Report No.: 09.231A - 09.231B

Issue Date: 2010.09.30

Responsible Certification Body: ACAE



PRD N°070B
Signatory of EA, IAF and ILAC
Mutual Recognition Agreements

Mauro Marchi

Authorized Signature

Date: 2010.10.29



ASSOCIAZIONE PER LA CERTIFICAZIONE
DELLE APPARECCHIATURE ELETTRICHE



Via Tito Livio, 5 - 24123 - BERGAMO (Italy)

tel. +390354175244 fax. +390354534662 e-mail: acaecert@tin.it

Certificate of Conformity

LOVAG-Certificate No. IT 10.129

Page 2 of 3

Circuit see page 3	Rated current (I_n) A	Rated short time withstand current (I_{cw}) A 3 sec	Rated conditional short-circuit current (I_{cc}) kA at 415 V
Q1	3000	50	--
Q2	3000	--	--
F/S1	800	--	50
F/S2	800	--	--

Responsible Certification Body: ACAE



PRD N°070B
Signatory of EA, IAF and ILAC
Mutual Recognition Agreements

Mauro Marchi

Authorized Signature

Date: 2010.10.29

Via Tito Livio, 5 - 24123 - BERGAMO (Italy)

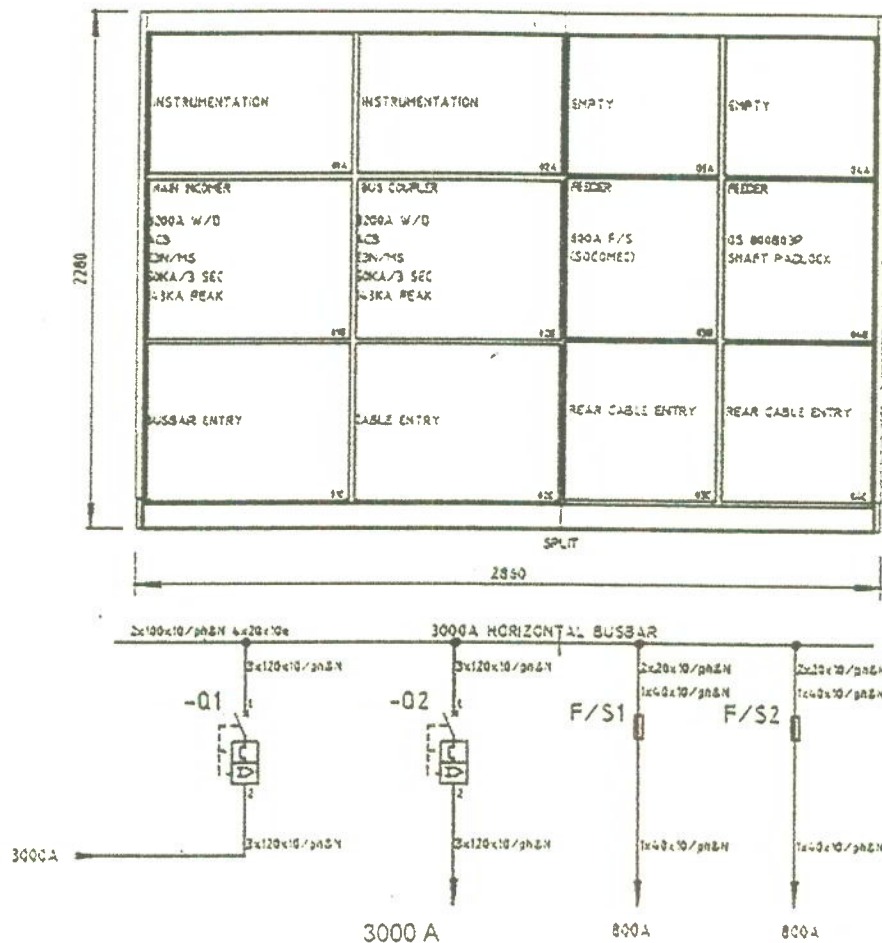
tel. +390354175244 fax. +390354534662 e-mail: acaecert@tin.it

Certificate of Conformity

LOVAG-Certificate No. IT 10.129

Page 3 of 3

CONFIGURATION OF THE ASSEMBLY:



Responsible Certification Body: ACAE



PRD N°0708
Signatory of EA, IAF and ILAC
Mutual Recognition Agreements



Mauro Marchi

Authorized Signature

Date: 2010.10.29